

Cross Hatch Adhesion Tester

This instrument is widely used to evaluate the adhesion of various coatings. A high precise machined wheel presenting 6 or 11 cutting blades with various spacing is mounted in a handle. The test is carried out by performing 2 series of crossed cuts at right angle. The obtained lattices is either brushed or cleared with adhesion tape. According to the coatings thickness and the related spacing, the results can be classified with reference to a standard scale. It has long life tool with 8 cutting edges and comfortable wood handle.

When applied to multi-coat system, assessment of the resistance to separation of individual layers of the coating from each other may be made.

Furthermore, all Biuged cross hatch testers are designed with turnable cutter holder, which is very convenient to cut coatings on curve or uneven surface and ensure to apply a uniform power to cut through the substrate.

The Cross Hatch Cutters conform with the requirements of:

BS 3900 E6; BS/EN ISO 2409; ASTM D 3359 D 3302

Main Technical Parameters:

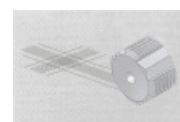
- ★ Eight working side blades: When the blade edge is not sharp enough, users can loosen the boat type nut and top thrust screw to rotate it to achieve a new blade.
- ★ Multi-cutting blades spacing: 1mm/2mm/3mm
- ★ The number of square: 25squares/100squares
- ★ Normal Packing List
 - ① Carrying case
 - ② Cross Hatch Cutter & Handle
 - ③ 1 roll of 3M Scotch Transparent Tape
 - ④ Brush
 - ⑤ Magnifier
 - ⑥ Calibration Certificate



BGD 502



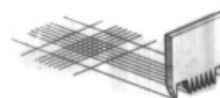
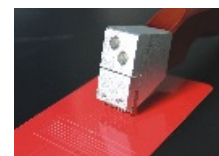
The turnable cutter holder is convenient to cut coatings on curve or uneven surface



| Ordering Information | No. of Teeth | No. of Cutting Edges | Cutter Spacing |
|----------------------|--------------|----------------------|----------------|
| BGD 502/2A | 11 | 8 | 1mm |
| BGD 502/3A | 6 | 8 | 1mm |
| BGD 502/4A | 11 | 8 | 2mm |
| BGD 502/5A | 6 | 8 | 2mm |
| BGD 502/6A | 6 | 8 | 3mm |
| BGD 504/2 | 11 | 1 | 1mm |
| BGD 504/3 | 6 | 1 | 1mm |
| BGD 504/4 | 11 | 1 | 2mm |
| BGD 504/5 | 6 | 1 | 2mm |
| BGD 504/6 | 6 | 1 | 3mm |



BGD 504



Procedure

- Make a lattice pattern in the film with the appropriate tool, cutting the substrate
- Brush in diagonal direction 5 times each, using a brush pen or tape over the cut and remove with special tape
- Examine the grid area using an illuminated magnifier.